
From data to insights for action: building partnerships

Sandra Carvao, Director

UNWTO Tourism Market Intelligence and Competitiveness Department

scarvao@unwto.org



AGENDA

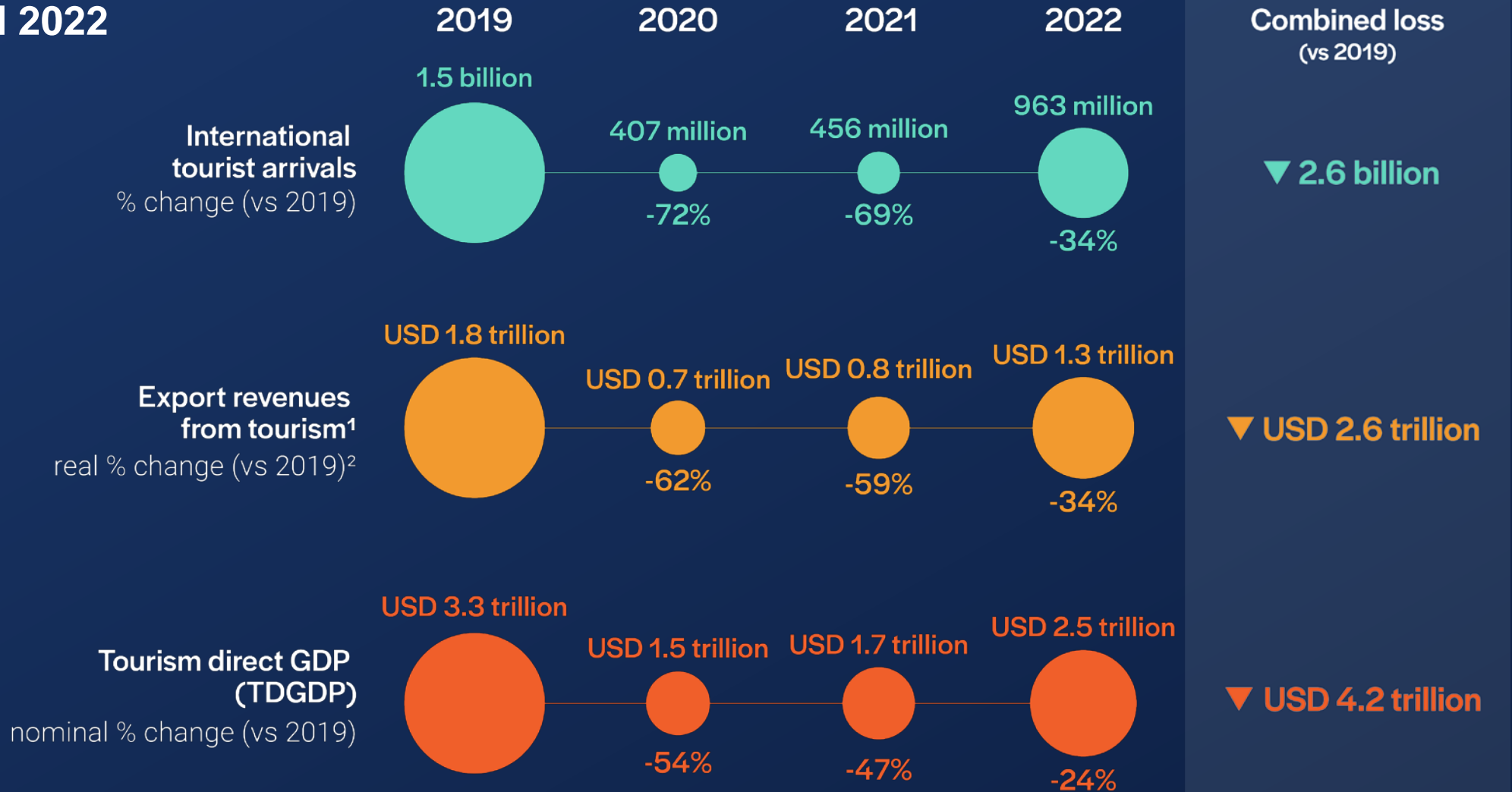
- 1 Latest International Tourism Data

- 2 Building partnerships:
From data to insights for
action

The worst crisis ever



Impact of coronavirus pandemic on tourism, 2020, 2021 and 2022



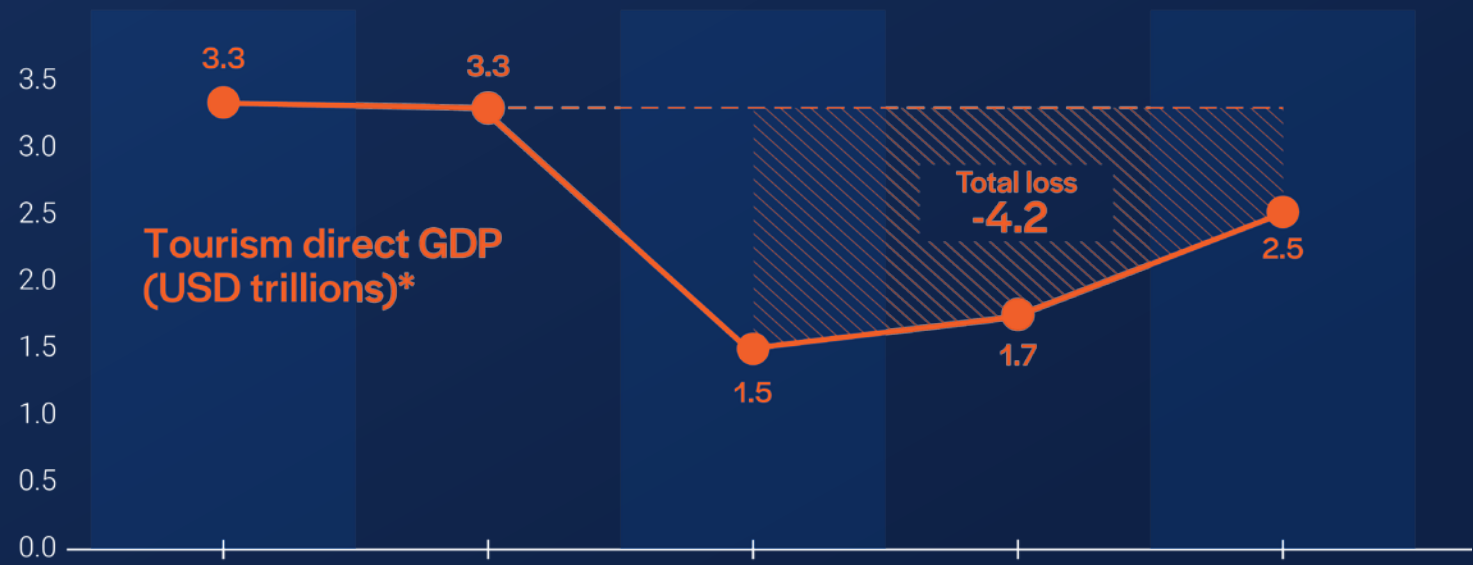
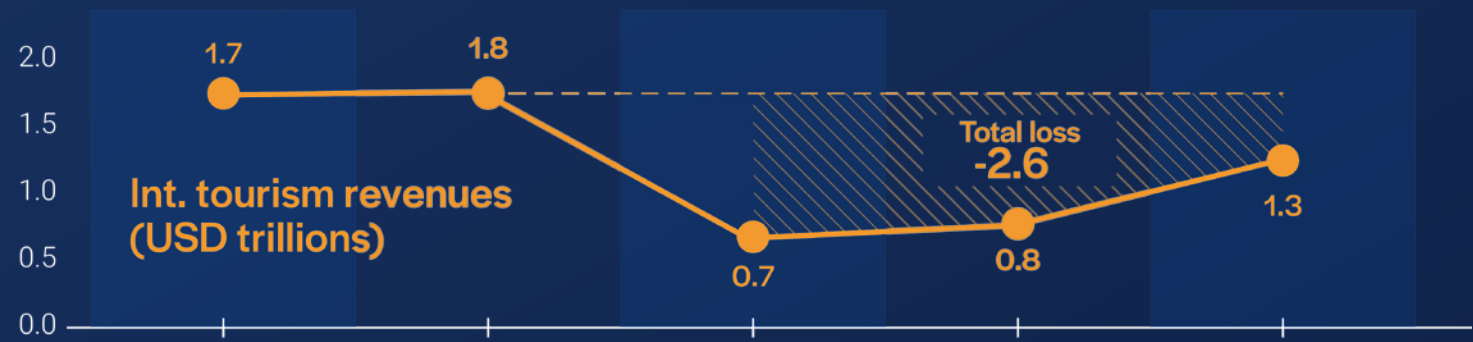
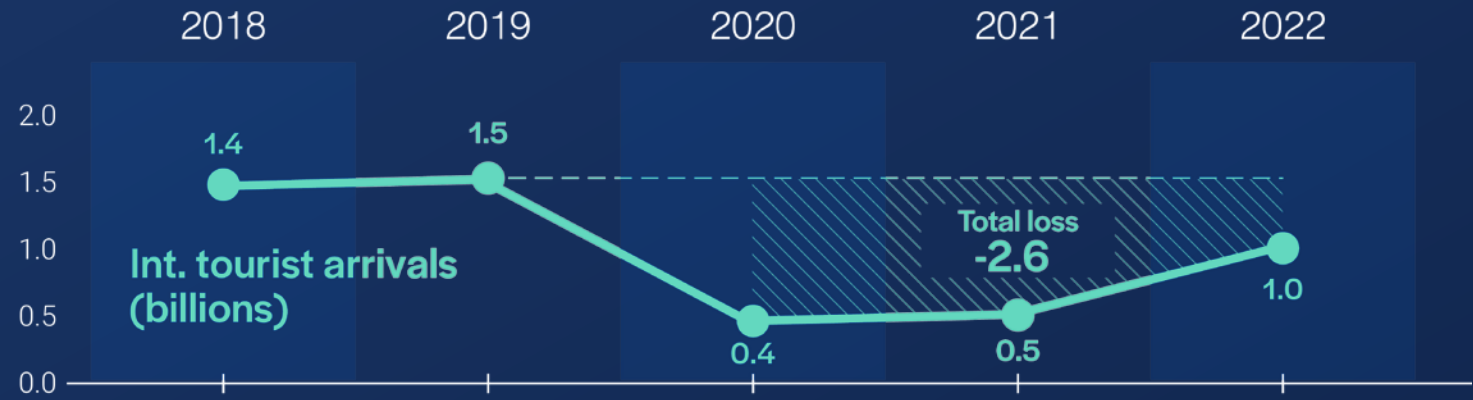
Source: World Tourism Organization (UNWTO)

¹ Revenues include international tourism receipts and passenger transport fares.

² In local currencies and constant prices.

Data as of June 2023
(TDGDP as of August 2023)

International tourist arrivals, tourism revenues and tourism direct GDP

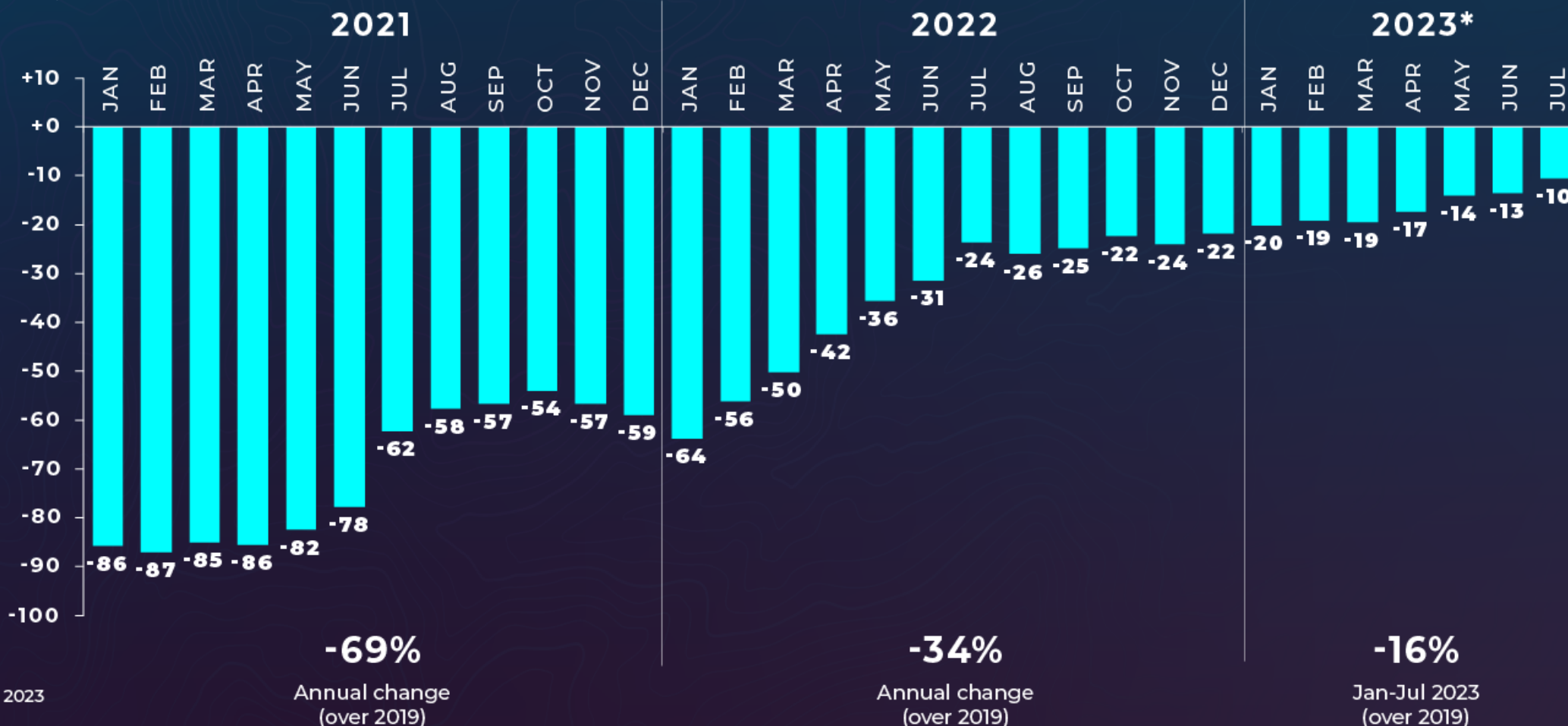


Source: World Tourism Organization (UNWTO)
*Tourism direct GDP data for 2022 is preliminary
TDGDP as of August 2023
Data as of June 2023

International tourist arrivals

(monthly change over 2019, %)

(% change over same months of 2019)



Source: UNWTO,
Data as of September 2023

* Provisional data

International tourist arrivals



World



Europe



Asia Pacific



Americas

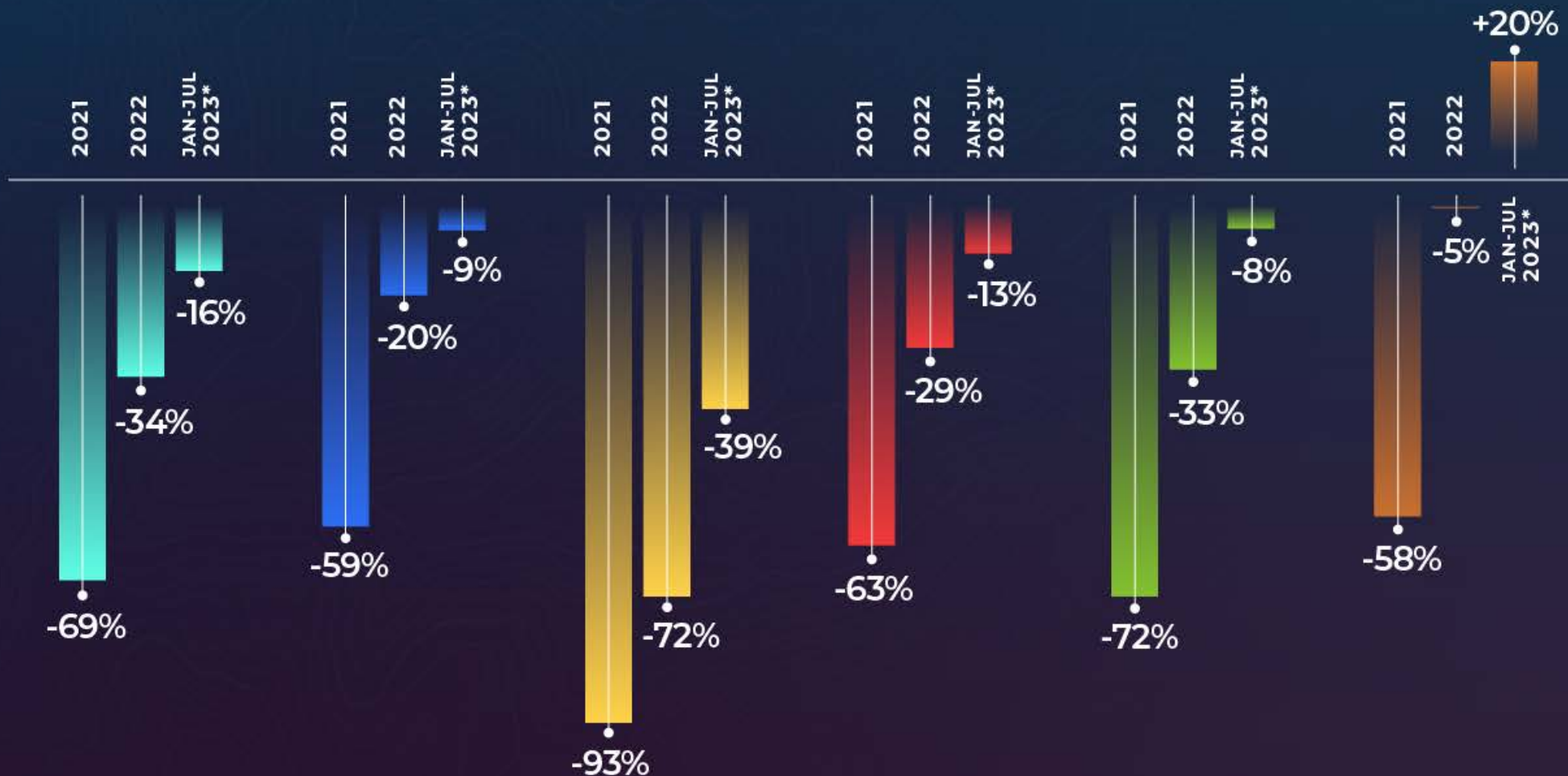


Africa



Middle East

(% change over 2019)



Building partnerships From data to insights for action





The first global dashboard for tourism insights

INTERNATIONAL TOURISM ~~AND~~ COVID-19

A compilation of data on country, regional and global level on the impact of COVID-19 on tourism, alongside an impact assessment on the economic impact of COVID-19 crisis on tourism.

SELECT AN AREA

Home

Tourism Results by Region

Tourism Results by Country

Monthly Change

Year-to-Date change

Vulnerability of Destinations

OTHER UNWTO DASHBOARDS

International Tourism

UNWTO Recovery Tracker

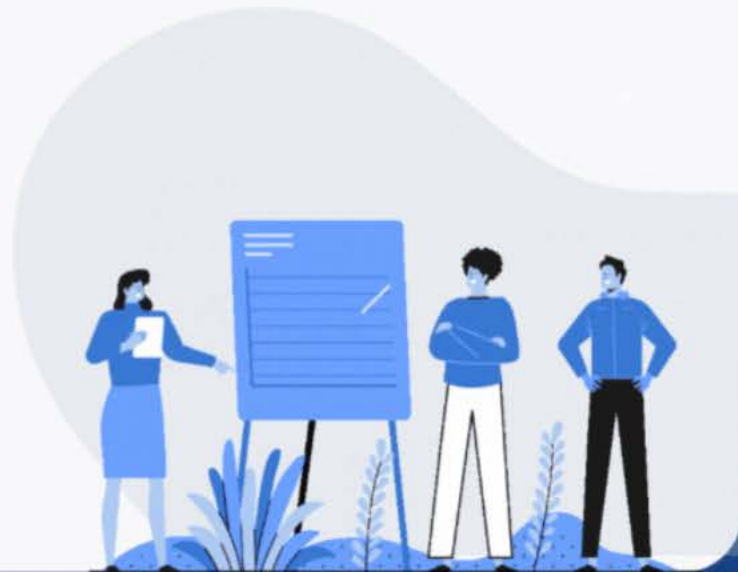
UNWTO/IATA Easy Travel

COVID-19: Measures to Support
Travel and Tourism

02.08.23

Latest update

Methodological Notes



[All Indicators](#)
[Tourism General](#)
[Air Traffic](#)
[Accommodation](#)

OVERVIEW

To see how each region or subregion is performing throughout recovery, select a region below.

COMPARE TO

[2019](#)
[Prev. year](#)

Current selection: **World**

Select a region or subregion

- Select all
- Africa
- Americas
- Asia and the Pacific
- Europe
- Middle East

Indicator-Source

Type

YTD (%)

Latest monthly data (%)

Data available

Change

Indicator-Source	Type	YTD (%)	Latest monthly data (%)	Data available	Change
Hotel Searches - Sojern	2. Accommodation	447 %	479 %	Aug 2023	Compared to 2019
Hotel Bookings - Sojern	2. Accommodation	108 %	95 %	Aug 2023	Compared to 2019
Occupancy Rates - STR	2. Accommodation		70 %	Aug 2023	Actual occupancy in %
Travel Sentiment - TCI RESEARCH	1. Tourism - general	34 %	37 %	Aug 2023	Compared to previous year
Short-term rentals - AirDNA	2. Accommodation	45 %	23 %	Aug 2023	Compared to 2019
Travel Search - Flights - Google	3. Air transport		21 %	Aug 2023	Compared to previous year
Seat capacity - domestic - IATA	3. Air transport	6 %	9 %	Jun 2023	Compared to 2019
Passenger Demand - domestic - IATA	3. Air transport	2 %	5 %	Jun 2023	Compared to 2019
Travel Search - Accommodation - Google	2. Accommodation		3 %	Aug 2023	Compared to previous year
Int. Tourist Arrivals - UNWTO	1. Tourism - general	-16 %	-10 %	Jul 2023	Compared to 2019
Passenger Demand - International - IATA	3. Air transport	-16 %	-12 %	Jun 2023	Compared to 2019
Seat capacity - International - IATA	3. Air transport	-16 %	-13 %	Jun 2023	Compared to 2019
Actual Air Reservations - ForwardKeys	3. Air transport	-41 %	-40 %	Aug 2023	Compared to 2019

[All Indicators](#)
[Tourism General](#)
[Air Traffic](#)
[Accommodation](#)

OVERVIEW

To see how each region or subregion is performing throughout recovery, select a region below.

COMPARE TO

[2019](#)
[Prev. year](#)

Current selection: **World**

Select a region or subregion

- Select all
- Africa
- Americas
- Asia and the Pacific
- Europe
- Middle East

Seat capacity - domestic - IATA

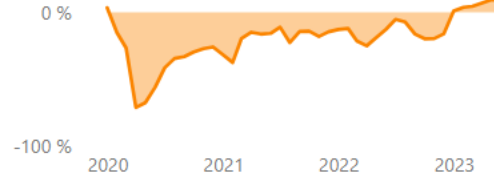
June 2023

9 %

Latest data

6 %

YTD



Seat capacity - International - IATA

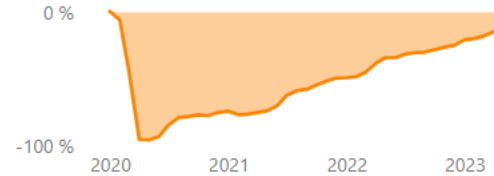
June 2023

-13 %

Latest data

-16 %

YTD



Actual Air Reservations - ForwardKeys

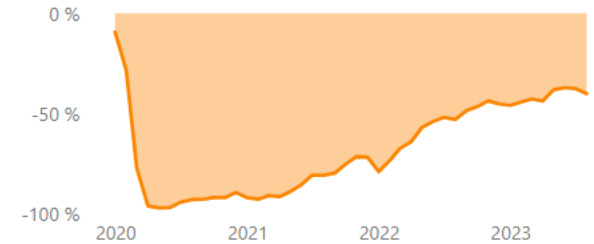
August 2023

-40 %

Latest data

-41 %

YTD



Passenger Demand - domestic - IATA

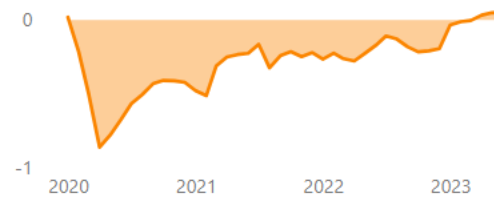
June 2023

9 %

Latest data

2 %

YTD



Passenger Demand - International - IATA

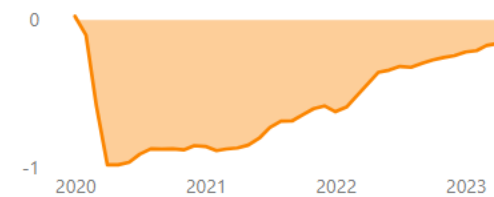
June 2023

-12 %

Latest data

-16 %

YTD

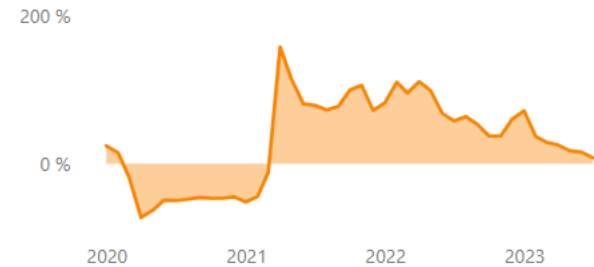


Travel Search - Flights - Google

July 2023

8 %

Latest data



Seat capacity - Internatio... **year-over-year (% change)** **IATA** <https://www.iata.org/> **Methodological notes**
 Indicator Measurement Data Source For more information, visit

SHOW DATA OF
 2020 2021 2022 **2023**

COMPARE TO
2019 Prev. year

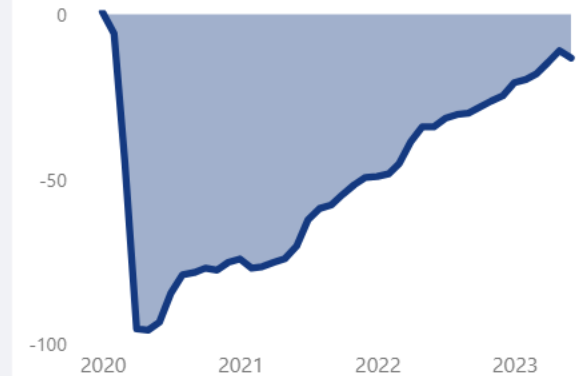
- SELECT AN INDICATOR
- Int. Tourist Arrivals
 - Seat capacity - domestic
 - Seat capacity - International**
 - Passenger Demand - domestic
 - Passenger Demand - International
 - Actual Air Reservations
 - Occupancy Rates
 - Hotel Searches
 - Hotel Bookings
 - Short-term rentals
 - Travel Search - Flights
 - Travel Search - Accommodation
 - Travel Sentiment

2023 is compared to Pre-Covid volume (2019 data)

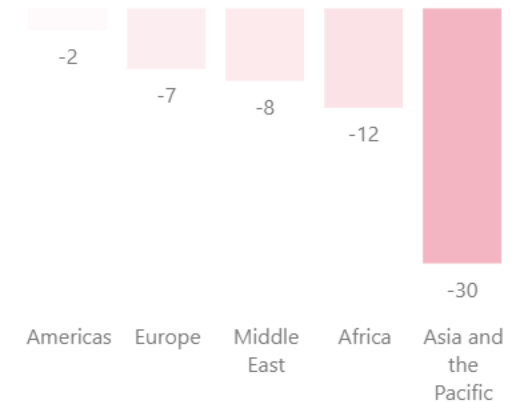
Click on a region or a month to visualize results in the graphs

Region	Jan	Feb	Mar	YTD
Africa	-11	-11	-14	-12
North Africa	7	9	-2	4
Subsaharan Africa	-20	-22	-21	-21
Americas	-17	-13	-13	-14
Caribbean	-6	-6	-6	-6
Central America	-8	1	0	-2
North America	-19	-16	-14	-16
South America	-20	-16	-19	-18
Asia and the Pacific	-50	-45	-43	-46
North-East Asia	-72	-65	-57	-64
Oceania	-40	-37	-33	-37
South Asia	-11	-10	-30	-17
South-East Asia	-34	-34	-29	-32
Europe	-8	-9	-11	-10
Central/Eastern Europe	-29	-29	-26	-28
Northern Europe	-11	-8	-8	-9
Southern/Medit. Europe	4	1	-3	0
Western Europe	-6	-7	-11	-8
Middle East	14	16	17	15
Middle East	14	16	17	15
World	-22	-20	-19	-20

Current selection: World



Latest available data: Jun 2023



TYPE OF INDICATOR

All Indicators

General Tourism Indicators

Accommodation

Air Traffic

SELECT AN INDICATOR

Int. Tourist Arrivals

Seat capacity - domestic

Seat capacity - International

Passenger Demand - domestic

Passenger Demand - International

Actual Air Reservations

Occupancy Rates

Hotel Searches

Hotel Bookings

Short-term rentals

Travel Search - Flights

Travel Search - Accommodation

Travel Sentiment

Indicators over time

To compare how each indicator is developing over time, please select all relevant indicators you would like to compare, as well as a region or a subregion. If no region is selected, it shows the global total.

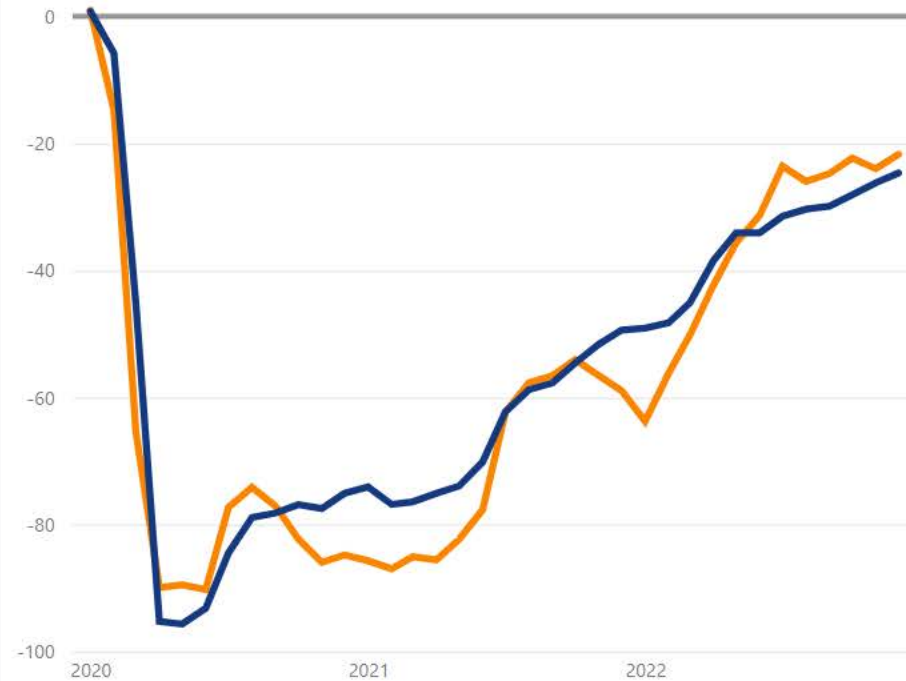
COMPARE TO

2019

Prev. year

YoY Change by indicator (%)

Indicator ● Int. Tourist Arrivals ● Seat capacity - International



Select a region or subregion

Region

Subregion

YTD change (%)



COVID-19 Restriction-free countries

This page shows the countries with no COVID-19 related restrictions. Click on a date to see the countries that are free of restrictions at that point.

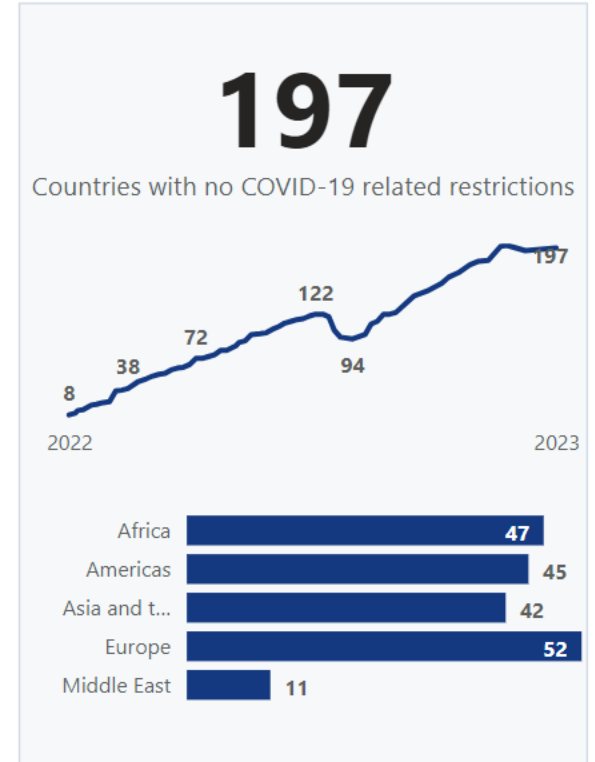
Select a view

Map

Table

Select a date

18.09.2023



The designations employed and the presentation of material in this publication do not imply the expression of any opinions whatsoever on the part of the Secretariat of the World Tourism Organization (UNWTO) concerning the legal status of any country, territory, city or area, or of its authorities or concerning the delimitation of its frontiers or boundaries.

The information provided is based on the latest data available. Please check official sources for most up-to-date information that is not yet reflected here and for any regional and local restrictions.

Disclaimer

Monthly change

This page provides an overview of **monthly change of tourism arrivals, receipts, expenditure** on a global, regional, subregional and country level as well as by country groupings.

Home

Tourism Results by Region

Tourism Results by Country

Monthly Change

Year-to-Date change

Vulnerability of Destinations

By region and subregion

By grouping

By country

Ranking

To see the development of each region, grouping or country compared to 2019 volume of each indicator, hover over the table.

FILTER PANEL

2020 2021 2022 **2023**

Arrivals

Expenditure

Receipts

Please select a region

Europe

Change (%), 2023 vs. 2019

Region	Jan	Feb	Mar	Apr	May	Jun	Jul	YTD (%)
Andorra	24 %	15 %	32 %	53 %	5 %	70 %	29 %	31 %
Bosnia & Herzg.	29 %	15 %	-1 %	-15 %	-5 %	-14 %	-0 %	-3 %
Croatia	-4 %	-16 %	-14 %	-7 %	1 %	-9 %	3 %	-2 %
Cyprus	10 %	13 %	8 %	4 %	-3 %	-10 %	-5 %	-2 %
Greece	-4 %	14 %	-14 %	40 %	5 %	5 %		7 %
Israel	-10 %	-10 %	-17 %	-12 %	-14 %	-12 %	-16 %	-13 %
Italy	-11 %	-7 %	-16 %	-8 %	-17 %	-11 %		-12 %
Malta	7 %	6 %	1 %	10 %	9 %	6 %	7 %	7 %
Montenegro	17 %	-9 %	17 %	16 %	19 %	9 %	17 %	14 %
North Macedonia	-16 %	-10 %	-15 %	-13 %	3 %	-6 %	9 %	-4 %
Portugal	12 %	15 %	14 %	15 %	9 %	6 %	9 %	11 %
San Marino	27 %	9 %	1 %	4 %	-19 %	-7 %		-1 %
Serbia	34 %	30 %	19 %	26 %	11 %	7 %	12 %	17 %
Slovenia	1 %	-3 %	-24 %	-8 %	3 %	1 %	16 %	2 %
Spain	-1 %	-1 %	-7 %	1 %	4 %	-6 %	3 %	-1 %
Türkiye	30 %	12 %	4 %	-1 %	9 %	3 %	6 %	7 %
World	-7 %	-8 %	-13 %	-9 %	-7 %	-11 %	-7 %	-9 %

From data to insights for action: building partnerships

Sandra Carvao, Director

UNWTO Tourism Market Intelligence and Competitiveness Department

scarvao@unwto.org